

Diaphragm pressure gauge Stainless steel version Models 432.50, 433.50

WIKA data sheet PM 04.03



for further approvals
see page 2

Applications

- For measuring points with increased overload
- With liquid-filled case suitability for high dynamic pressure loads and vibrations
- For gaseous and liquid, aggressive and highly viscous or contaminated media, also in aggressive ambience
- Process industry: Chemical, petrochemical, power plants, mining, on-/offshore, environmental technology, machine building and general plant construction

Special features

- All stainless steel construction
- High overload safety
- Process connection thread or open flange
- Wide choice of special materials
- Scale ranges from 0 ... 16 mbar



Diaphragm pressure gauge model 432.50

Description

Design

EN 837-3

Nominal size in mm

100, 160

Accuracy class

1.6

Scale ranges

0 ... 16 mbar to 0 ... 250 mbar (flange Ø 160 mm)
0 ... 400 mbar to 0 ... 25 bar (flange Ø 100 mm)
or all other equivalent vacuum or combined pressure and vacuum ranges

Pressure limitation

Steady: Full scale value
Fluctuating: 0.9 x full scale value

Overload safety

5 x full scale value, however max. 40 bar

Permissible temperature

Ambient: -20 ... +60 °C
Medium: ≤ 100 °C
Storage: -40 ... +70 °C
(scale ranges ≤ 60 mbar: -20 ... +70 °C)

Temperature effect

When the temperature of the measuring system deviates from the reference temperature (+20 °C): ≤ ±0.8 %/10 K of full scale value

Ingress protection per IEC/EN 60529

IP54 for model 432.50
IP65 for model 433.50 (with liquid filling)

Standard version

Process connection with lower measuring flange

Stainless steel 316L, G ½ B (male), SW 22

Pressure element

≤ 0.25 bar: Stainless steel 316L

> 0.25 bar: NiCr-alloy (Inconel)

Pressure chamber sealing

FPM/FKM

Movement

Stainless steel

Dial

Aluminium, white, black lettering

Pointer

Aluminium, black

Case with upper measuring flange

Stainless steel, with blow-out device

Gauges with liquid filling with compensating valve to vent case

Window

Laminated safety glass

Bezel ring

Bayonet ring, stainless steel








Filling liquid (for model 433.50)

Glycerine 86.5 %

Options

- Other process connection
- Sealings (model 910.17, see data sheet AC 09.08)
- Safety version (model 43x.30)
- Overload safety: 10 x full scale value, max. 40 bar
- Vacuum safe to -1 bar
- Max. medium temperature +200 °C
- Permissible ambient temperature -40 ... +60 °C (silicone oil filling)
- Higher indication accuracy, class 1.0
- Open connecting flanges per DIN/ASME from DN 15 to DN 80 (preferred nominal widths DN 25 and 50 or DN 1" and 2"; see data sheet IN 00.10)
- Wetted parts lined/coated with special materials such as PTFE (model 45x.50), Hastelloy, Monel, nickel, tantalum, titanium, silver (accuracy class 2.5, overload safety on request)
- Pressure gauge with switch contacts, see model PGS43.1x0, data sheet PV 24.03
- Pressure gauge with electrical output signal, see model PGT43.1x0, data sheet PV 14.03

Approvals

Logo	Description	Country
	EU declaration of conformity ATEX directive (option) Hazardous areas - Ex c Zone 1 gas II 2 G c IIC TX X (for instruments without PTFE lining) II 2 G c IIB TX X (for instruments with PTFE lining) Zone 21 dust II 2 D c TX X	European Union
	EAC (option) ▪ Pressure equipment directive ▪ Hazardous areas	Eurasian Economic Community
	GOST (option) Metrology, measurement technology	Russia
	KazInMetr (option) Metrology, measurement technology	Kazakhstan
-	MTSCHS (option) Permission for commissioning	Kazakhstan
	BelGIM (option) Metrology, measurement technology	Belarus
	Uzstandard (option) Metrology, measurement technology	Uzbekistan
-	CPA (option) Metrology, measurement technology	China
	KCS (KOSHA) (option) Hazardous areas - Ex i Zone 1 gas [Ex ia IIC T6]	South Korea
-	CRN Safety (e.g. electr. safety, overpressure, ...)	Canada

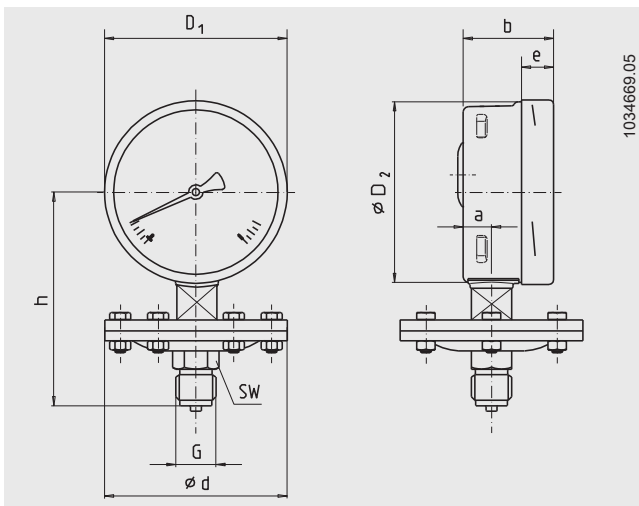
Certificates (option)

- 2.2 test report per EN 10204
(e.g. state-of-the-art manufacturing, material proof, indication accuracy, free from substances of animal origin)
- 3.1 inspection certificate per EN 10204
(e.g. material proof for wetted metallic parts, indication accuracy)
- Others on request

Approvals and certificates, see website

Dimensions in mm

Standard version



NS	Scale range	Dimensions in mm										Weight in kg
	in bar	d	a	b	D ₁	D ₂	e	G	h ±2	SW		
100	≤ 0.25	160	15.5	49.5	101	99	17.5	G ½ B	119	22	2.50	
160	≤ 0.25	160	15.5	49.5	161	159	17.5	G ½ B	149	22	2.90	
100	> 0.25	100	15.5	49.5	101	99	17.5	G ½ B	117	22	1.30	
160	> 0.25	100	15.5	49.5	161	159	17.5	G ½ B	147	22	1.70	

Process connection per EN 837-3 / 7.3

Ordering information

Model / Nominal size / Scale range / Process connection / Connection location / Options

© 10/2008 WIKA Alexander Wiegand SE & Co. KG, all rights reserved.
The specifications given in this document represent the state of engineering at the time of publishing.
We reserve the right to make modifications to the specifications and materials.